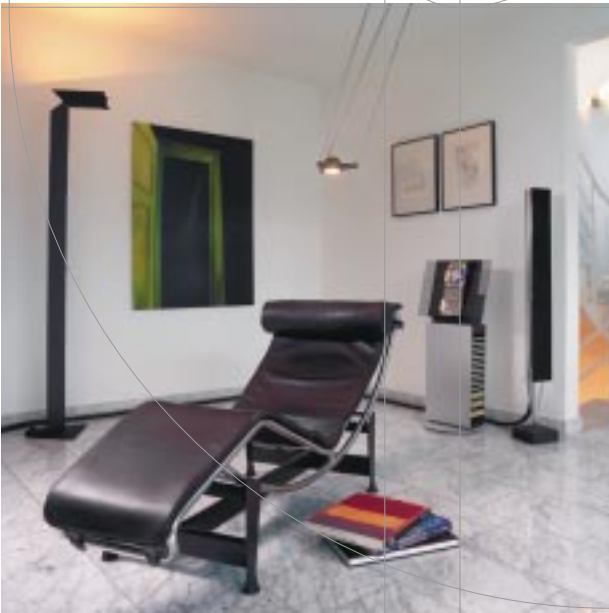




SIEMENS

Building Technologies

Quality, innovation, style.





Introduction

A brief history

Established in the UK in 1843, by our founder Sir William Siemens (pictured left), Siemens now operates through a decentralised structure and its headquarters is in Bracknell (Berkshire).

Among many notable firsts achieved by Siemens were the laying of the Indo-European telegraph link in 1869, creating a 7,000 mile line from London to Calcutta, which cut the time required for a message to travel between the two cities from many days to only 28 minutes, the first electric street lighting in the world at Godalming, Surrey and the laying of the first direct transatlantic underwater telegraph cable link.

In 1881 Siemens created the first commercial power station in the world at Godalming and two years later, Siemens laid a single track

railway line from Portrush to Bushmills in County Antrim which was probably the first electric train contract in the world.

We also helped solve the problem of the inefficient and wasteful distribution of water throughout England with the Siemens 'fluid meter' which was patented in 1852.

In 1883 William Siemens was knighted by Queen Victoria in recognition of his outstanding services to the cause of science, he was also the founder and first president of the Institute of Electrical Engineers.

The company is still at the forefront of World technology and innovation and made a significant contribution to the British economy through its export performance, which totalled £424 million euros in 2001-02.

Our Company

Siemens Building Technologies' comprises a group of industry leading businesses, all of which have unrivalled experience in their respective market sectors. These sectors include Building Automation, Fire Safety and Security.

This unique expertise has been developed around five key businesses:

Building Automation (BAU) specialists in energy management and control systems for heating, ventilating and air-conditioning systems in industrial, commercial and domestic premises.

HVAC Products (HVP) experts in the distribution of products for the control and the management of combustion, ventilation, air-conditioning and refrigeration equipment in commercial buildings also in domestic heating and electrical heating products since 1968.

Fire and Security Products (FSP) - formerly Alarmcom - for the distribution of cutting edge intrusion detection products, digital, remote monitoring and network based CCTV solutions.

Security Systems (SES) specialising in providing the ultimate totally integrated electronic solution for access control, video surveillance and intrusion detection in buildings.

Fire Safety Systems (FIS) - formerly Cerberus - provides fire and safety systems and services for fire detection, protection and extinguishing in buildings.

Siemens Building Technologies (SBT) is part of the Siemens Automation and Control business of Siemens plc. In the fiscal year 2001-02, SBT employed over 36,000 personnel in over 500 branch offices in 44 countries and recorded worldwide sales of 5,619 million euros.

With an annual turnover of £2.6 billion, and with more than 16,000 employees, Siemens in the United Kingdom provides innovative, high quality services and solutions to customers in a diverse range of industry sectors comprising: power, automation and control, information and communication, medical, transportation, lighting and household.



Energy Efficiency recommends these products only when installed according to Government Good Practice Guide 302.



Menu driven programming... ...just like using a mobile phone,

The new RWBs



Menu Driven

- Menu driven programming
- Backlit display
- Simple operation
- 24-hour, 7-day or weekend/weekday program
- Two or three ON/OFFs per day
- Holiday programming
- LED 'ON' light
- Advance facility
- Boost facility
- Override facility
- Independent timing for hot water and central heating
- Gravity or fully pumped systems
- Ideal for combi boilers



RWB27



RWB29

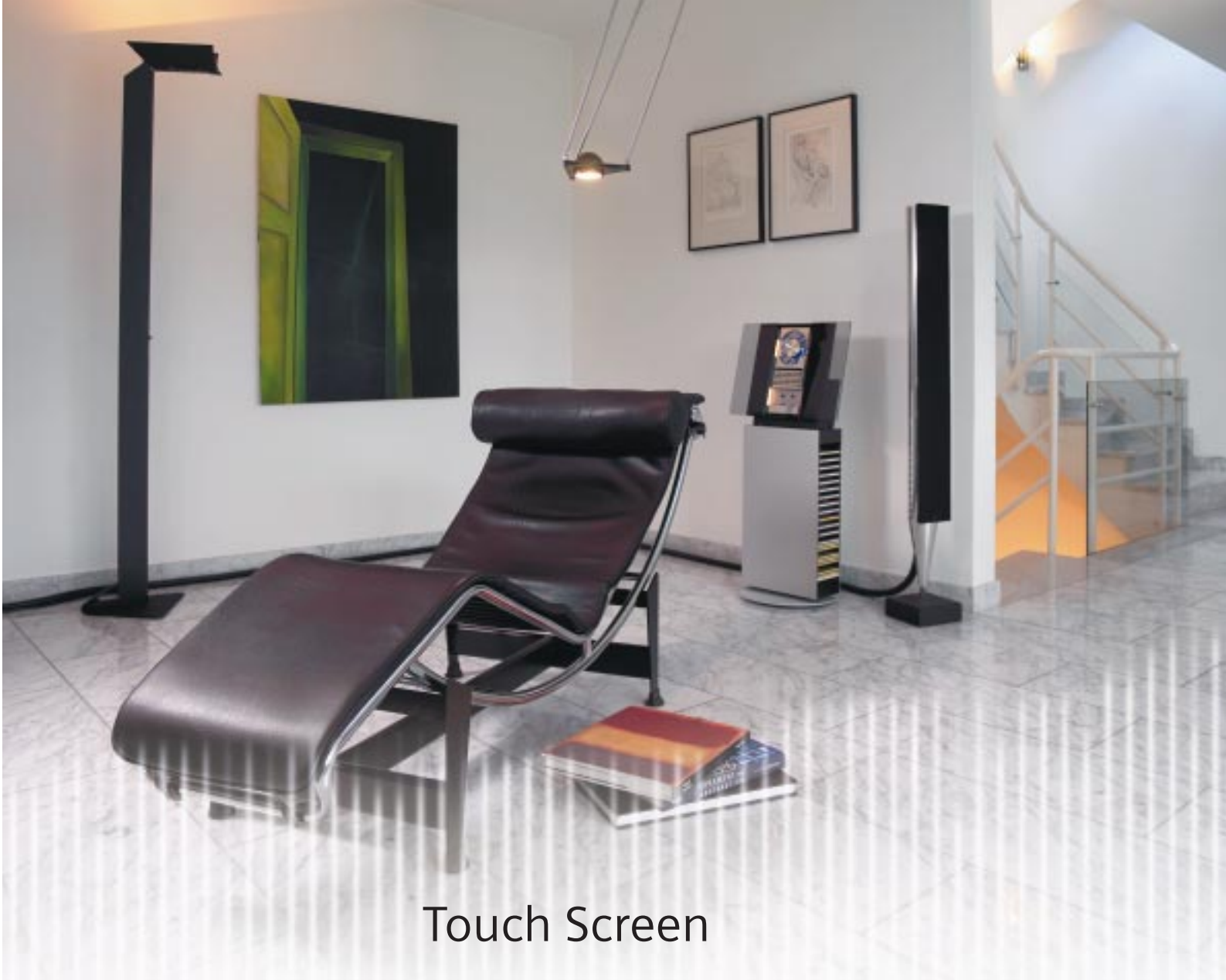


Energy Efficiency recommends these products only when installed according to Government Good Practice Guide 302.



Room Thermostats





Touch Screen



REV100



REV200

The **Touch Screen** thermostats have a futuristic and intuitive user interface.
REV100: 24 hour program; 2-position
REV200: 7-day program; 2-position

REV200 has a backlight to enhance the display.

In addition to the ultimate in home comfort and energy saving, they have new features that make installation even easier than before.

Remote telephone contact and holiday mode are included as standard.

- **Futuristic design**
- **Touch screen interface for easier programming**
- **Optimum in home comfort and energy saving**
- **Option for backlit display**
- **Options for 24-hour or 7-day program**
- **Easy installation**
- **Remote telephone contact**
- **Holiday mode**



Push and roll

- **Elegant design**
- **Push and Roll interface**
- **Optimum in home comfort and energy saving**
- **Options for 24-hour, 7-day or 5/2-day program**
- **Easy installation**
- **Remote telephone contact option**
- **Holiday mode option**
- **Radio frequency option**
- **Modulating (Open Therm) option**
- **Recess mounted**
- **Choice of three colours**



REV12



REV23



REV23RF



REV26

Offering the very latest in design elegance, the new **Push and Roll** thermostats have a unique roller-selector programming interface.

They offer the ultimate in home comfort, energy saving and flexibility via industry-leading, patented technology for the most demanding temperature control requirements.

There are options with radio frequency and with modulating (Open Therm) outputs for condensing boilers.



Classic



RAV 11/RAV12

These thermostats are ideal for customers seeking a **Classic** design combined with the very best in comfort and energy saving.

The patented control algorithms have the flexibility to operate in the most demanding temperature control applications.

The classic range also offers features, refined over many years, for easy installation.

RAV11 and RAV12 have an analogue clock with either 24-hour or 7-day program options.

- **Classic design**
- **Slider or analogue interface options**
- **Optimum in home comfort and energy saving**
- **Options for 24-hour, 7-day program**
- **2-position output**
- **Easy installation**



Standard

- **Stylish design**
- **Easy operation**
- **Highly attractive prices**
- **Quick & easy installation**

RAA



RDD



RDE



The **Standard** range suits customers who see affordability and simplicity as their top priorities. Included are the following families:

RAA.. - electromechanical on/off

RDD.. - electronic on/off with display

RDE.. - easy 7-day programmable

Overview of the heating and cooling range

MODEL		APPLICATION				FUNCTIONALITY						
		Heating only	Cooling only	Heating, cooling and hot water	Control Algorithm	LCD	Delay timer	Daily time program	Weekday/weekend time program	Weekly time program	On/Off	Radio Frequency
HEATING AND HOT WATER PROGRAMMING												
MENU DRIVEN	Soft touch programming											
	RWB27	✓				✓		✓	✓	✓	✓	
	RWB29			✓		✓		✓	✓	✓	✓	
ROOM THERMOSTATS												
TOUCH SCREEN	Touch screen programmable											
	REV100**			✓	✓	✓		✓				
	REV200**			✓	✓	✓		✓	✓	✓		
PUSH AND ROLL	Push and roll											
	REV12	✓			✓	✓		✓				
	REV16**	✓			✓	✓		✓				
	REV23**			✓	✓	✓				✓		
	REV23RF/SET*			✓	✓	✓				✓		✓
CLASSIC	Analogue programmable											
	RAV11.1/7	✓			✓			✓		✓		
	RAV12.1/7	✓			✓			✓		✓		
STANDARD	Simple On/Off											
	RAA10			✓								
	RAA20			✓								
	Simple On/Off with display											
	RDD10	✓				✓	✓	✓				
	RDD10.1	✓				✓	✓	✓				
	Slimline programmable											
	RDE10	✓				✓				✓		
	RDE10.1	✓				✓				✓		
	RDE20.1	✓				✓				✓		✓

* Including receiver REV-R.02/1 (230V) ** Remote telephone contact included

Power options and User Interface overview

MODEL	POWER			USER INTERFACE										
	Battery	AC 230 V	AC 24...250 V	Menu driven	Touch screen	Setpoint button	Roller selector programming	Operating mode switch	Setpoint knob	On/Off	Timer set button	Programming buttons	Analogue clock	Flush mounting
HEATING AND HOT WATER PROGRAMMING														
MENU DRIVEN	Soft touch programming													
	RWB27		✓	✓				✓		✓	✓	✓		
	RWB29	✓		✓				✓		✓	✓	✓		
ROOM THERMOSTATS														
TOUCH SCREEN	Touch screen programmable													
	REV100**		✓	✓										
	REV200**		✓	✓										
PUSH AND ROLL	Push and roll													
	REV12	✓					✓	✓			✓	✓		
	REV16**	✓					✓	✓			✓	✓		
	REV23**	✓					✓	✓			✓	✓		
	REV23RF/SET*	✓						✓	✓			✓	✓	
	REV26	✓						✓	✓			✓	✓	✓
CLASSIC	Analogue programmable													
	RAV11.1/7	✓						✓	✓				✓	
	RAV12.1/7		✓					✓	✓				✓	
STANDARD	Simple On/Off													
	RAA10			✓										
	RAA20			✓										
	Simple On/Off with display													
	RDD10		✓			✓	✓				✓	✓		
	RDD10.1	✓				✓	✓				✓	✓		
	Slimline programmable													
	RDE10		✓			✓	✓				✓			
	RDE10.1	✓				✓	✓				✓			
	RDE20.1	✓				✓	✓				✓			

* Including receiver REV-R.02/1 (230V) ** Remote telephone contact included

Siemens Building Technologies Ltd

HVAC Products
Hawthorne Road
Staines
Middlesex
TW18 3AY

Tel. 01784 461616

Fax 01784 464646

www.sbt.siemens.com

Building Technologies