

A-CLASS *GulfStream*

A high efficiency storage appliance for
heating and mains pressure hot water



One of the best selling '**Apartment Portfolio**' of products

- Long horizontal flues
- No pressure and temperature relief needed
- Supplied with **SWITCH** emergency heating and hot water as standard

High performance
heating and hot water

 **Gledhill**
The appliance of innovation

A-CLASS GulfStream

THE ULTIMATE ALL IN ONE MAINS PRESSURE HOT WATER

- A complete heating and hot water package with **everything plumbed and wired** within the case

With all its system components concealed behind a beautifully engineered outer case, GulfStream A-Class consigns cupboard pipework to the history books and cuts installation time dramatically.

- A **six minute recovery** means enough hot water for even the most demanding situations

Sufficient to fill a bath in under 4 minutes, GulfStream A-Class is eminently suitable for multi-bathroom properties. It provides more than twice as much hot water per hour as unvented cylinders and there are models suitable for up to a 6 bedroom house.

- Fitted with **SWITCH** to give 'peace of mind' to the installer, developer and homeowner



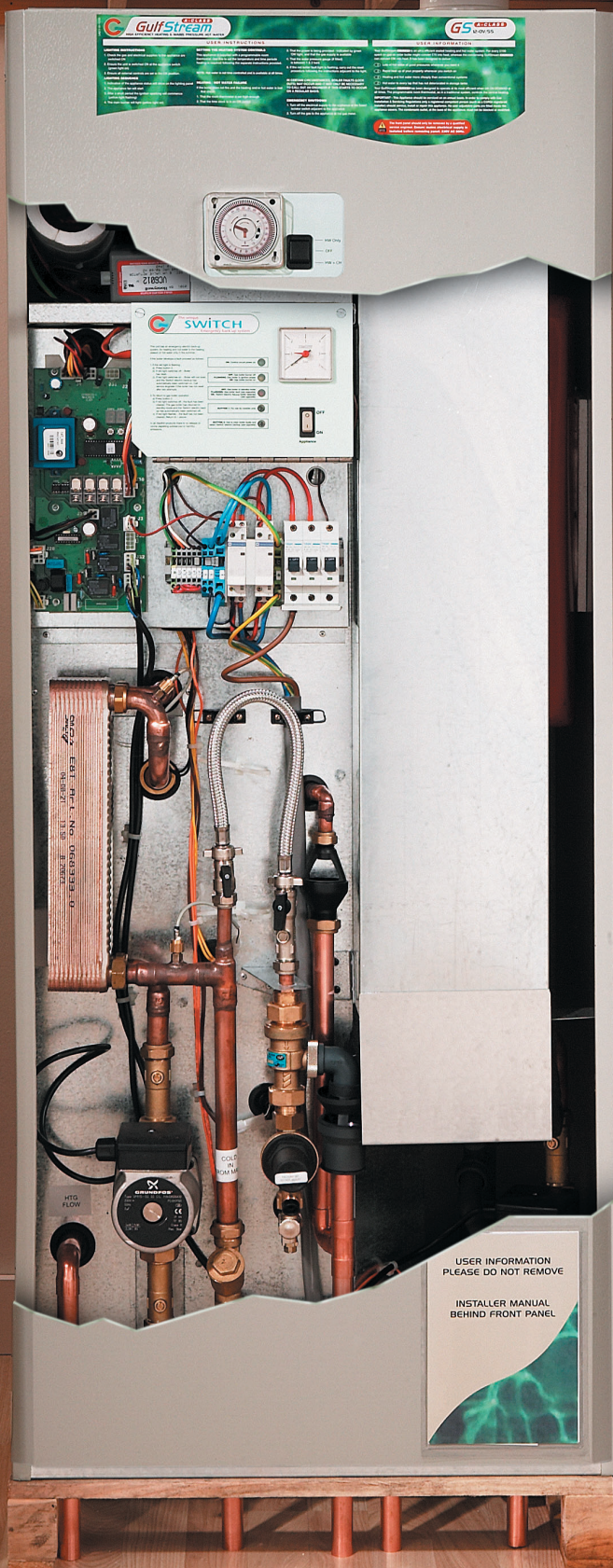
It's like having a service engineer with each unit – instant response to boiler problems restores heating and hot water at the press of a button.

- **SEDBUK A Rated efficiency** guarantees low running costs (SEDBUK B on the largest model)

A modulating burner and intelligent digital controls increase overall efficiency and earn the highest possible SAP ratings. A low NOx burner ensures that emissions are lower than current EC requirements.

- The ultimate in **siting flexibility** – for apartments or new homes

GulfStream A-Class incorporates a room sealed fanned flue condensing boiler with a broad range of flueing options – long horizontal flueing ideal for apartments; through the ridge or the wall for houses upstairs or in kitchens and utility rooms.



PACKAGE FOR HIGH EFFICIENCY HEATING AND WATER

Plus these advanced features

- Controllers and software have redundancy/ fault tolerance for component failures
- Remote and local diagnostic options
- Certain models are solar compatible
- Temperature can be set for underfloor heating
- Both pumps modulate for highest efficiency, lowest running cost and reduced noise.

Technical Specification of <i>GulfStream</i> <small>A-CLASS</small>						
Model	GSA 12 OV	GSA 12 SS	GSA 20 OV	GSA 20 SS	GSA 30 OV	GSA 30 SS
Height (mm)	1450	1450	1450	1450	1450	1450
Width (mm)	595	595	595	595	595	595
Depth (mm)	595	595	595	595	595	595
Min cupboard height (mm)	1850*	1850*	1850*	1850*	1850*	1850*
Min cupboard width (mm)	700	700	700	700	700	700
Min cupboard depth (mm)	620*	620*	620*	620*	620*	620*
Hot water flow rate (l/m)	35	35	35	35	35	35
Max property heat loss (kW)	10	10	18	18	26	26
Weight (empty) (kg)	88	104	88	104	88	104
Weight (full) (kg)	188	204	188	204	188	204
Property Selection Guide						
Bedrooms	1-3	1-3	2-4	2-4	3-6	3-6
Bathrooms	1	1	1	1	2 1	2 1
En-suite shower	1	1	2	2	1 3	1 3

Tappings:

1/2" BSPF expansion relief. BS21 1/2" gas cock. Heating flow and return cold mains and hot draw off all 22mm compression.

22mm combined discharge from pressure relief valve and C.A. auto-filling device. The flow rates quoted above assume normal dynamic water pressures and adequate flow to property.

*With rear balanced flue option, minimum depth should be increased to 745mm.

Heights shown for the appliance do not include 100mm installation base.

*Minimum cupboard height shown is for the SS model. A height of 2300 - 2500mm is required for the OV model, depending on the location of the F&E cistern.

System fitted with:

- High Efficiency SEDBUK 'A' Rated condensing boiler
- Modulating pumps for heating and DHW
- Electro mechanical clock for heating and hot water timed control (digital as an option)
- SWITCH emergency heating and hot water back-up.

Sealed primary systems

- Primary expansion vessel
- Pressure gauge
- Pressure relief valve
- Automatic filling loop

or

Open vented primary systems

- Feed and expansion cistern
- Ballvalve / float
- Overflow connection

Optional extras

- Digital clock
- Remote fixing kit for clock
- Flexible pipe fitting kit
- Grundfos 15/60 pump for larger systems
- Scale reducer fitted within the casing for EXTREMELY hard water conditions (optional)

Approvals

All models meet the essential requirements of the European Gas Appliance Directive. GulfStream A-Class complies with the Energy Efficiency Endorsement Scheme promoted by the Energy Saving Trust. Part L Building Regulations and Water Regulations. In performance, it complies with the requirements of BS6700 and meets the NHBC criteria for domestic properties. Gledhill Water Storage Ltd also operates a quality management system audited and accepted by the BSI in accordance with BS EN ISO 9001:2000.

Designs

Gledhill can offer a design service for space heating and hot water. Technical manuals are available on request.



This product has an energy rating A or B on a scale of A-G. For more information see www.boilers.org.uk

Pricing/Orders: 01253 474400
Technical: 01253 474401
Spares: 01253 474402

Gledhill Water Storage Limited, Sycamore Estate, Squires Gate, Blackpool FY4 3RL
Tel: (01253) 474444 Fax: (01253) 474445
E-mail: sales@gledhill.net

Our appliances are distributed through Gledhill Building Products depots at Blackpool, Braintree, Bristol, Dudley, Hemel Hempstead, Huntingdon, Inverkeithing, Liverpool, Maidstone, Newport, Nottingham, Southampton, Totnes, Washington.

Information on the full range of Gledhill products can be found on the internet at www.gledhill.net

We support our customers in five unique ways

CUSTOMER CARE

SWITCH – removes the need for an emergency response in nearly all cases.

True 'peace of mind' for all



FIELD SUPPORT

Gledhill have a Key Partner Charter (available on request) covering

- ➊ extended component warranty
- ➋ no quibble component replacement
- ➌ technical help line 7 days a week
- ➍ technical support on site
- ➎ contribution to costs

EXTENDED SERVICE AGREEMENT AVAILABLE

An optional extended service agreement for this product is available to the homeowner. Please call for further details.

EXPERIENCE

We have been involved in water storage for longer than anyone else in the industry - count on the Gledhill family when it matters.

CARING FOR THE ENVIRONMENT

In all Gledhill products there is no release of ozone depleting substances or harmful emissions. Our copper vessels are totally recyclable.

Due to a programme of continuous improvement Gledhill Water Storage reserve the right to modify products without prior notice.

It is advisable to check the product technical detail by using the latest design and installation manuals available from our technical support team or on our website.

Spec 53. Issue 01. 03/05

 **Gledhill**
The appliance of innovation
Sustaining World Class Manufacturing
through the CBI Probe Benchmark